

HC 5026

Chroma Renew

Restores the color a makes the surface strong, water- and dirt-repellent and UV-resistant.

PRODUCT DESCRIPTION:

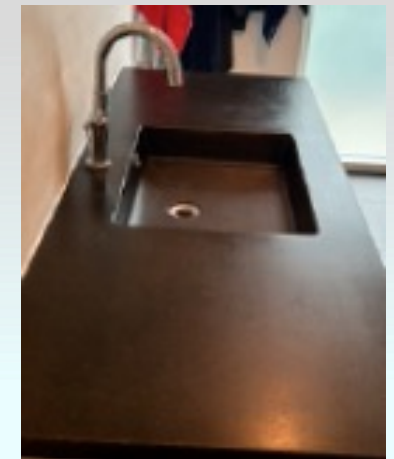
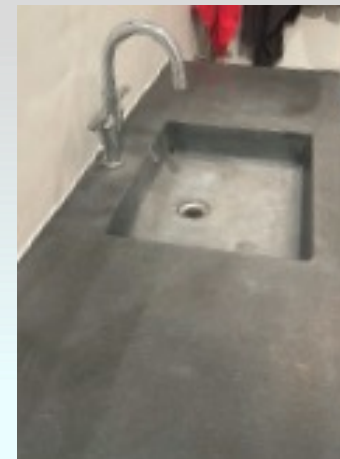
By using Chroma Renew, a visual improvement is achieved on substrates such as metal, PVC, aluminium, painted surfaces and varnish. Graffiti

HIGHLIGHTS:

- restores the color and makes the surface strong, water- and dirt-repellent, and UV-resistant.
- can also give gloss to matte surfaces.
- can be used on varnish, PVC, aluminium, fibreglass, metal, steel, natural tiles, marble, limestone, slate, brick, clay tiles, concrete and painted surfaces.
- is a coating that is invisible and extremely durable.
- leads to perfect stain resistance.
- extends the life of the surface.
- effectively protects against corrosion.
- is heat resistant.



Gates



Concrete

